

# Hang Seng Business e-Banking User Guide

## Securities Trading on Mobile App

### 🔔 Important Reminder

This feature only applies to the **Primary User** of the Hang Seng Business e-Banking **Principal Company** profile, and a Securities Account must be activated.

You can activate your securities account via 2 online channels. For detailed procedures, please refer to the relevant User Guides for [the web version of Business e-Banking](#) or [Mobile App](#).

## Steps for Trading Securities

### STEP 1 Select and Open the Function

Tap **Investments** > **Securities** from the side menu on the left after logging in to **Hang Seng Business Mobile App**.

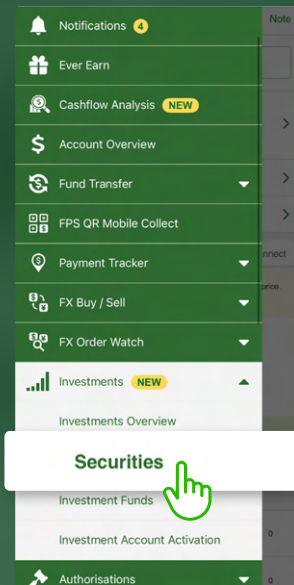
#### Enable Automatic P/L Calculation

If you have not enabled the automatic P/L calculation function for your company, you will be guided to enable this function.

Refer to [Section A](#) for details, or skip this section if you have already enabled it.

#### Trade Securities

To buy or sell securities, please refer to [Section B](#).



# Hang Seng Business e-Banking User Guide

## Securities Trading on Mobile App

### Section A: Enable P/L Calculation

#### STEP 1 Enable the Function Now or Later

##### To Enable P/L Calculation Immediately: Tap **Enable P/L calculation**.

Enabling the automatic P/L calculation function will also automatically enable it for other Business e-Banking profiles under the same Business Registration Number.

##### To Enable the Function Later: Tap **Not Now**.

You can still trade securities and view your securities holding details, but average price and P/L data will not be shown. Any average purchase price previously entered manually in the web version of Business e-Banking will remain unchanged, but it will not be synced to Mobile App. You can enable the function at any time later from **Securities** page.

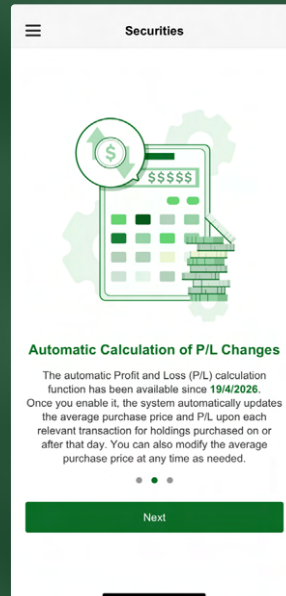
#### About Automatic P/L Calculation

This function automatically updates the average purchase price and profit and loss (P/L) upon each transaction of your securities holdings.

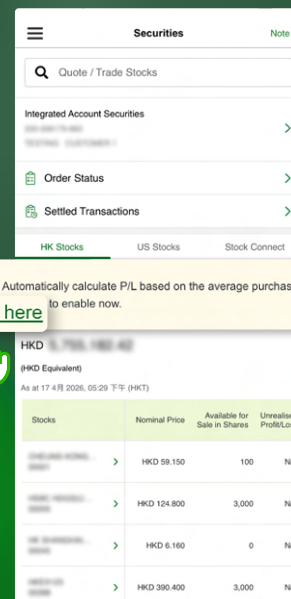
Once you enable it, the average purchase price for all holdings as of 17/4/2026 will be set to the closing price on 17/4/2026, and any average purchase price previously entered manually in the web version of Business e-Banking will be superseded. After that, you can modify the average purchase price at any time as needed.

If you have previously entered average purchase prices manually in Business e-Banking via desktop, please record these values before enabling this function if you wish to re-enter them later.

Tap **Enable P/L Calculation** to enable the function immediately.



If you tap **Not Now**, you can enable the function later on the Securities Page by tapping "**Tap here**".



# Hang Seng Business e-Banking User Guide

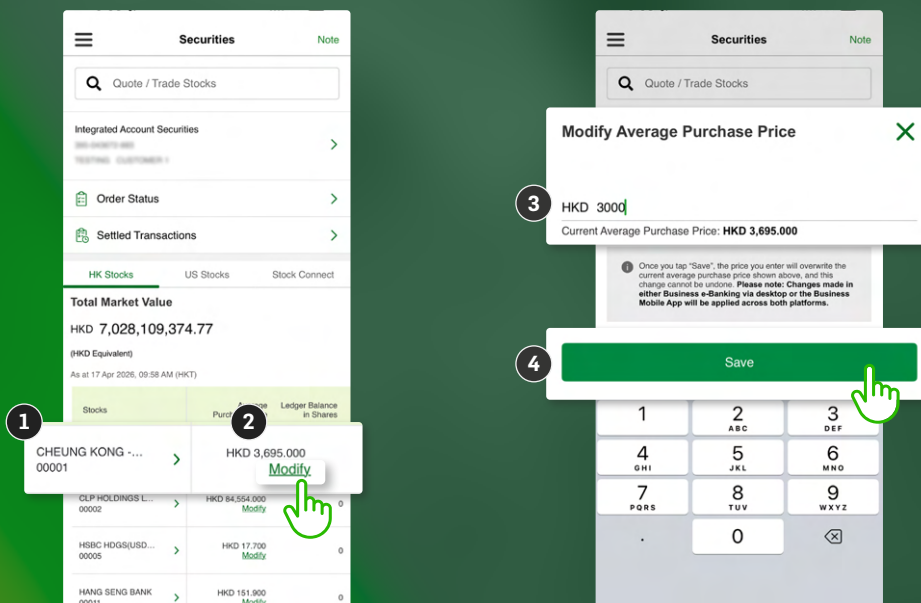
## Investment Funds

### Section A: Onboarding

#### STEP 2 Post-Enablement: Modifying Average Purchase Price

After the P/L calculation function is enabled, you can manually refine your average purchase price to ensure more accurate performance tracking:

- 1 On the **Securities** page, swipe left on a specific stock to view its average purchase price and P/L.
- 2 Tap **Modify** to manually enter a revised average purchase price.
- 3 Enter your desired average purchase price.
- 4 Tap **Save**. The average purchase price will be modified.



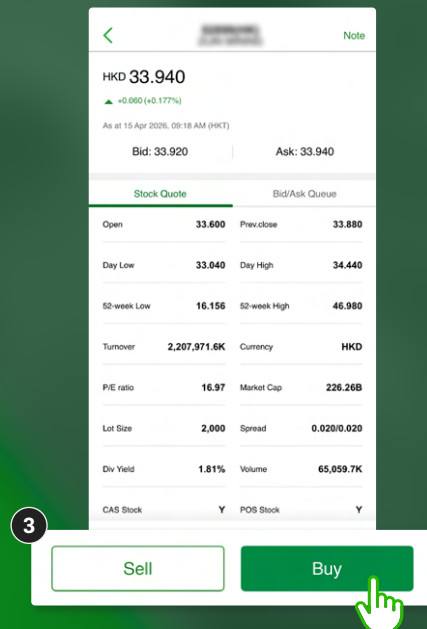
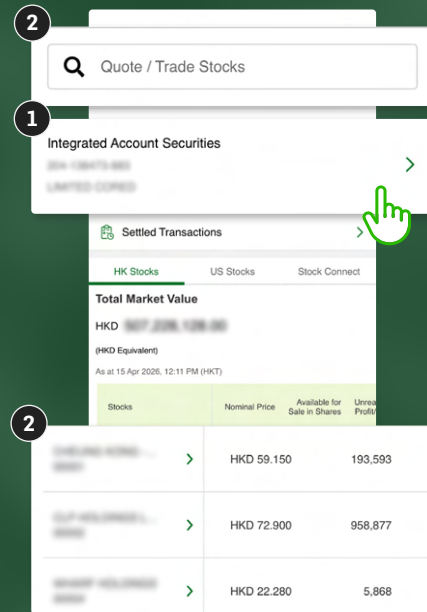
# Hang Seng Business e-Banking User Guide

## Securities Trading on Mobile App

### Section B: Trade securities

#### STEP 1 Choose a Stock to Trade

- 1 Select a Securities Account.
- 2 Search for a stock by entering its name or stock code. Alternatively, if you already hold securities, you can also tap any existing stock holding listed on this page to trade.
- 3 Tap **Buy** or **Sell**.



# Hang Seng Business e-Banking User Guide

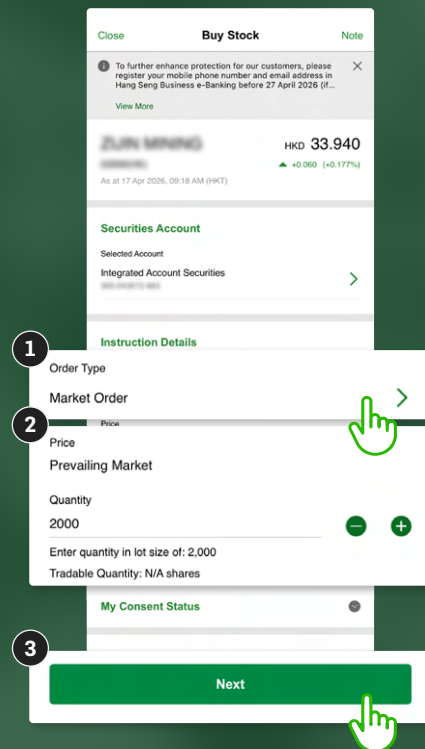
## Securities Trading on Mobile App

### Section B: Trade securities

#### STEP 2 Enter Trade Instructions

- 1 Select an **Order Type**.
- 2 Enter instruction details.
- 3 Tap **Next** to continue.

\*Note:  
Instruction details required may differ slightly based on Order Types.



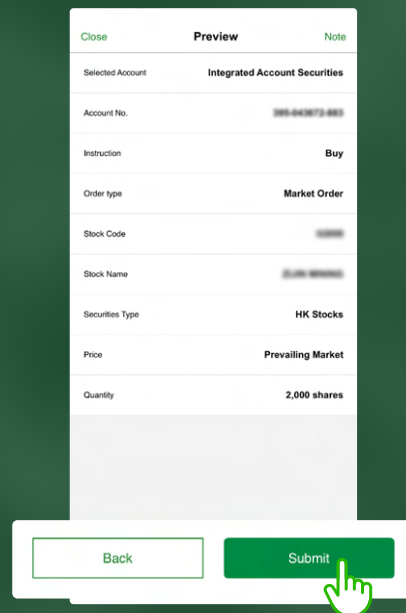
# Hang Seng Business e-Banking User Guide

## Securities Trading on Mobile App

### Section B: Trade securities

#### STEP 3 Preview the Order

Read the information carefully before you tap **Submit**.



#### STEP 4 Completion

Instruction received.  
You can tap **Go to Order Status** to check the status;  
or tap **View Portfolio** to check your securities holdings.

